

# Hammond **TIMES**

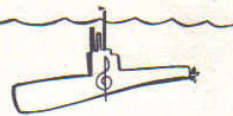
VOL. 21 NO. 5

R



*Christmas  
music  
for  
Everyone*





## A FAMILY WELCOMES NEW MEMBERS

It has been almost twenty-five years since Hammond Organ Company introduced the first electric organ. Over this comparatively short span of years, the Hammond Organ has found a place for itself in over 40,000 churches, in hundreds of thousands of homes, in schools, clubs, mortuaries, auditoriums, places of entertainment, and yes—even aboard a submarine!

When we consider this overwhelming acceptance of the Hammond Organ—the millions of people who are entertained or gain enjoyment from it, we might think we have reached a plateau. The Hammond Organ is responsible for musical enjoyment on the part of thousands who never thought they would play a musical instrument. Also, the Hammond Organ has established itself as a true church instrument, capable of providing rich music for religious services in the largest cathedrals in the world. And at the same time, has it not proved itself to be easy-to-play in the hands of children and adults alike who seek a musical education or just plain relaxation and enjoyment? These are indeed worthwhile goals, thought impossible to obtain a generation ago, yet they have been reached.

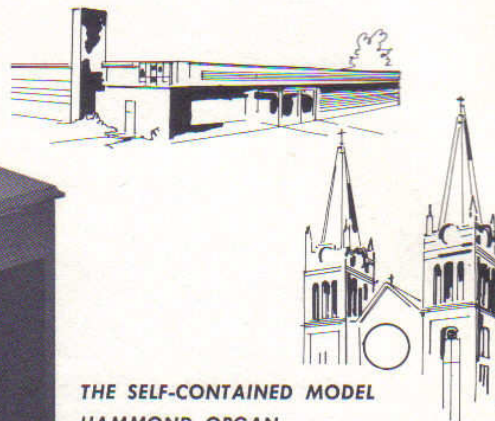
Yes, the family of fine Hammond Organs has come a long way. To the first Hammond Organ model intro-

duced in 1935 have been added other models, each to make its own place in an ever-growing family. The Hammond Concert Model Organ, born in the late 1940's, was followed by the Hammond Spinnet, which was destined to become the most popular organ in the world. Then came the Hammond Chord Organ, small and easy-to-play, and it captured the hearts of thousands who never dreamed of playing music themselves. Thus, the family has grown and prospered. Each new model has found a place of its own, and without encroaching on other "members of the family".

And now, there are two new members of the Hammond family. Though they are part of the fold, they are not dependent on the other models for their existence. You will read on another page of this issue about the new Extravoice Organ, a revolutionary type of keyboard instrument which allows three manual performance on a single manual. New and different, the Extravoice complements other Hammond Organ models.

The Self-Contained Model Hammond Organ, illustrated below, is the second new Hammond team-member. Similar in musical resources to the Hammond Home and Church Models, the Self-Contained Model has an engineered acoustical console containing both amplifier and speakers. Thus, just one piece of fine furniture—the organ itself—not only produces music, but amplifies it and causes it to sound.

With this new and enlarged Hammond family, greater goals are envisioned. New friends will be made, and a higher level of influence will be reached. For the Hammond Organ is still young and growing—a progressive family in a progressive age.



THE SELF-CONTAINED MODEL  
HAMMOND ORGAN

# Hammond TIMES

VOL. 21 NO. 5

Published by Hammond Organ Co., 4202 W. Diversey Ave., Chicago 39.  
Subscription free on request. Request from your Hammond dealer.



# HAMMOND ORGAN MUSIC BRINGS ADDED JOY *To Christmas Season*

**Festive Holidays Marked by Music in the Home**

A NEW HAMMOND CONCERT MODEL ORGAN was the choice of Dr. and Mrs. Gilbert C. Wildman, Racine, Wisconsin. Mrs. Wildman is a Hammond Organ teacher, and finds great pleasure in helping others to enjoy music. "We have listened to and tried many other makes of organs but none can match the Hammond", says Dr. Wildman.

MR. HERMAN F. HINZ, JR., purchased his Hammond Home Model Organ several years ago. "An organ is a very relaxing instrument to play because of the limitless expression", says Mr. Hinz. "Our Hammond is quite frequently the topic of conversation and is certainly an admired addition to our home. In the past five years we have never had to repair our Hammond. We did change the tubes—not because we had to, but because it had done such a fine job we felt we owed it a new set." Mr. Hinz is president of an advertising printing firm in Arlington Heights, Illinois.

A LOVER OF MUSIC ALL HIS LIFE, Mr. Emmett Bailie of Port Charlotte, Florida, "picked up" playing the Hammond Spinet Model Organ two years ago. At one time in Steubenville, Ohio, he conducted a nine piece orchestra, playing engagements at churches and lodges. Now he plays the organ for his friends, and sometimes puts a speaker out in his yard so all his neighbors can listen and enjoy a concert in their living rooms.

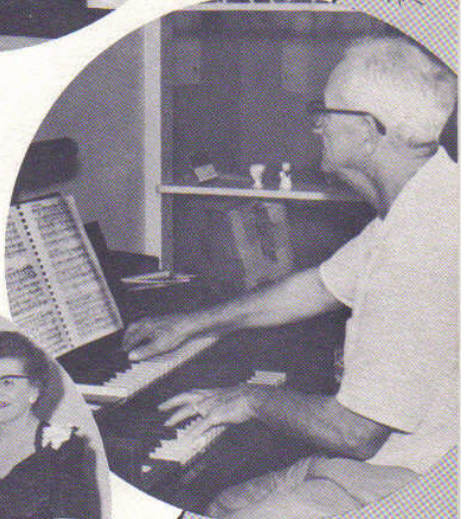
"IT'S NEVER TOO LATE TO LEARN", says Mrs. Pauline Mitchell of Barbourville, Kentucky. At the age of fifty-seven, Mrs. Mitchell was elected one of the organists of her church, the First Baptist Church. Though she had never before played the Hammond Organ, she combined her natural musical talents and limited experience on the piano in learning to play for worship services. She has owned her own Hammond Organ for two years, and enjoys playing for her friends and for shut-ins over the telephone.



Dr. and Mrs.  
Gilbert C.  
Wildman



Mr. Hinz



Mr. Emmett Bailie



Mrs. Pauline  
Mitchell



### The Cover

During the Christmas season, many banks and commercial institutions offer holiday greetings to their patrons by playing hymns and carols in the lobby. The Capital National Christmas Chorus, made up of employees of the Capital National Bank, Austin, Texas, presented noontime programs. In Massachusetts, the Springfield Institution for Savings entertained patrons with holiday music played by Rene E. Bonnevie. Two bank employees look on.





## Hammond Provides First Lady with First in Entertainment

The combined efforts of Win Nelson and Fred Dense provided the Senate Ladies Red Cross Group's annual First Lady Luncheon with top entertainment. Playing simultaneously on two Home Model Hammond Organs, a diversified program was presented for the senate ladies and the First Lady, Mrs. Dwight D. Eisenhower.

Mrs. Clair Engle, wife of the Senator from California, who introduced the organ duo, said she understood the organ to be Mrs. Eisenhower's favorite instrument. During portions of the program the First Lady enthusiastically rose to see the performance more clearly.

Mrs. Eisenhower, whose usual custom is to leave immediately when attending large-group affairs, instead remained to chat with the musicians and guests. She mentioned that she has a Hammond Spinnet Organ in the White House, but because of her busy schedule can play it only on Sunday mornings. When asked whether or not she had considered taking lessons, the First Lady remarked, "As soon as we get out of this job"!



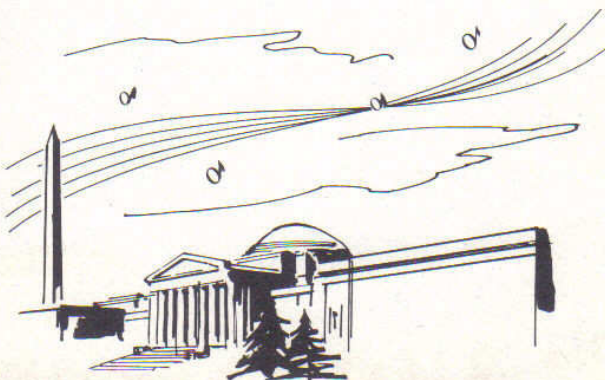
MRS. DWIGHT D. EISENHOWER was presented with a white-and-blue nosegay before Mrs. Olin Johnston (right) and Mrs. Wallace Bennett took her to the luncheon given in her honor by the Senate Ladies Red Cross Group.



"Tea for Two Cha-Cha" was the first number on the program played by the Nelson-Dense organ duo. It was followed by a medley from "My Fair Lady"; a solo by Win Nelson, "China Nights"; and the "Cha-Cha Polka", solo by Fred Dense. The organ duo was then resumed with the "Third Man Theme". In honor of our two new states, they played a "Hawaiian Medley" and "Winter Wonderland". The encores "Brazil" and "Bye Bye Sunshine" concluded the program.

The party took place in the old Supreme Court Chamber of the Capitol Building where the Supreme Court met for eight decades prior to the construction of their own building. It was also the room in which Queen Elizabeth and Prince Philip were feted on their visit to the United States.

EXCELLENT ENTERTAINMENT was provided at the "First Lady Luncheon" by the Win Nelson-Fred Dense organ duo.





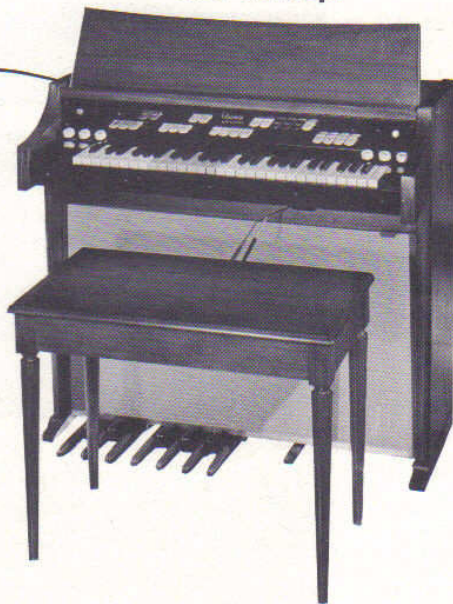
# NEW Extravoice\* ORGAN

## HAS FOUR DIVISIONS OF TONE

**Low Priced Extravoice is New in Design and Concept**



The Extravoice Organ is compact, measuring only 38 inches wide and 21 inches deep. It is self-contained, with amplifier and speakers within the console.



NEW HAMMOND EXTRAVOICE ORGAN

From the modern lines of the console to musical performance of four independent tonal divisions, the Extravoice Organ is truly a new musical instrument. The name "Extravoice" signifies an independently generated melody lead tone, produced by the Extravoice Division.

The single manual of the Extravoice controls three of the four tonal divisions, the Accompaniment, Treble and Extravoice Divisions. The Pedal Division is played on a 12-note pedalboard. A wide variety of orchestral and traditional organ tones is made possible through 24 stop tablets.

Many of the features found on other models of the Hammond Organ have been incorporated in the Extravoice Organ. Selective Vibrato and "Touch Response" Percussion allow the organist a wide range of musical expression. And, of course, the quality craftsmanship, and fine construction of woodwork, earmarks of all Hammond Organs, have been carefully applied to the Extravoice Organ.



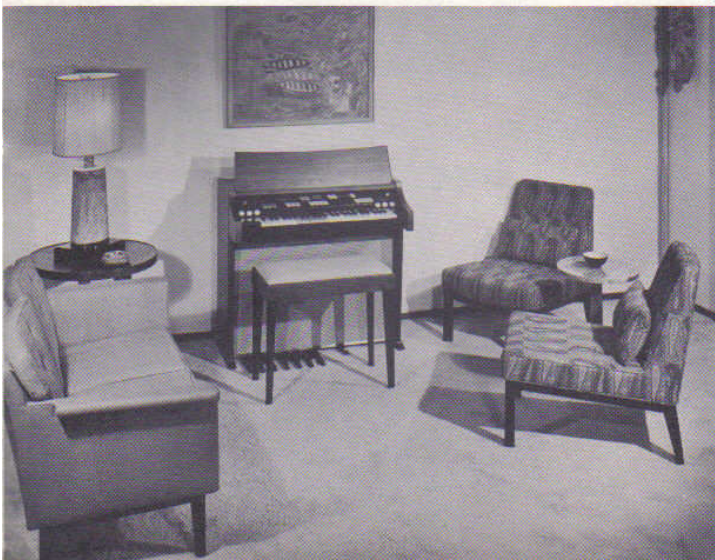
Available in beautiful modern walnut finish, the Extravoice Organ with timeless furniture styling will add grace to any home furnishings.



On the Extravoice Organ, Treble and Accompaniment parts may be played simultaneously with an "extra voice"—that is, a third part which sounds as the highest note played with the right hand. It is this feature of the Extravoice Organ which allows three manual performance on a single manual.

Additional features of the Extravoice Organ include Accompaniment Melody Lead, Vibrato Pedal Control, Pedal Sustain Control, and maximum Volume Control. Designed for use in homes as well as churches and schools, the new Extravoice Organ will adequately perform wherever fine organ music is desired.

\*Trademark, Hammond Organ Company, Chicago, Illinois





# Hammond Organ Societies Grow from Almost 500 Chapters Throughout the United States and Canada



**WILTON, CONNECTICUT**—The first annual Election and Dinner Dance of the Southern Connecticut Chapter was held at the Treadway Inn in Norwalk. Seventy-six charter members and 35 new members participated in the election of officers, and enjoyed an evening of music and entertainment.



**SACRAMENTO, CALIFORNIA**—"Children's night" was featured at a recent meeting of the City of Trees Chapter. A fast growing and active organization, this Chapter enjoyed an evening of organ solos played by sons and daughters of the members.



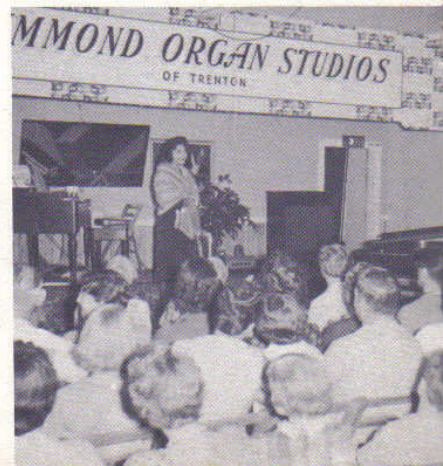
**MANKATO, MINNESOTA**—Fifty members and guests attended a party-meeting held at the Y.W.C.A. Featured on the program was a lute duet, magician act, and Hammond Organ solos by several members.



**TULSA, OKLAHOMA**—Lew Corte and Howard Jenkins presented a Hammond Organ concert sponsored by the Tulsa Chapter. Proceeds went to the Tulsa Boys Home Music Scholarship Fund, set up by the Chapter last year. Attendance at regular monthly meetings averages 175 members and guests.



**TRENTON, NEW JERSEY**—Members of the Trenton Chapter enjoyed a Fur Fashion Show presented at a recent meeting. Models and representatives of the Trenton fur salon who conducted the show praised Hammond Organ music as an aid in showing the furs.





# Within Through Planned Programing



**APPLETON, WISCONSIN**—A joint dinner meeting of the Fox Valley Chapter and the Hammond Chord Organ Club of Fox Cities was enjoyed by 130 members. After a delicious family-style dinner, the members were entertained with a planned program, including a skit, a concert played on three Hammond Organs, and selections played by guest organists.



**SAN ANTONIO, TEXAS**—Fifteen-year-old Jimmy Center provided an entertaining evening of Hammond Organ music at a meeting of the San Antonio Chapter. The meeting was held in San Antonio Music Company's Recital Hall.



**SHREVEPORT, LOUISIANA**—Twenty-five families make up the membership of the Shreveport Chapter. The Chapter meets the second Tuesday of each month in the homes of members.



**PORTLAND, OREGON**—A Hammond Spinet Model Organ was installed in a chartered bus when the Portland Chapter visited the Eugene, Oregon, Chapter. Members enjoyed a song fest on the bus, as well as an entertaining Hammond Organ program in Eugene.



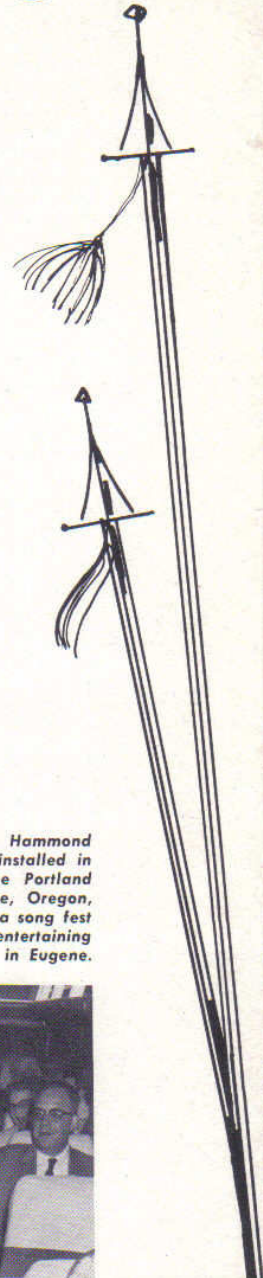
## ATTENTION! HAMMOND ORGAN SOCIETY CHAPTERS



Now you can add identification prestige and color to your meetings by using the new Hammond Organ Society banner imprinted with the name of your chapter.

This colorful banner is imprinted in black and gold on a rich satin finish background. 44" x 32", it is mounted on gilt spear tipped crossbars with gold cord, tassels and fringe. The cost, including three word imprint is only \$7.50.

The banner will make a lovely lasting gift to the chapter that all the members will appreciate and enjoy for years. Order a Hammond Organ Society banner for your chapter through your Hammond dealer or direct from Hammond Organ Company. Please enclose check and indicate the Chapter name to be imprinted.

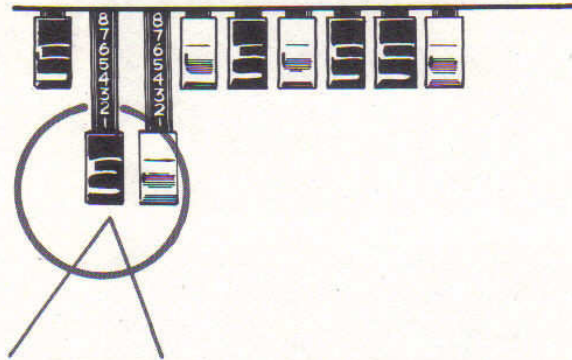






By Orville R. Foster

# FUN AT THE HAMMOND



## THE SECOND BROWN DRAWBAR

One of the most significant facts I learned about Hammond organists as I travelled about the country during the past year was this: they have more possibilities for magnificent tone production at the Hammond Organ than anywhere else, and they have taken little trouble or time to explore these possibilities. Nowhere else is it possible to blend colors so easily and so perfectly than in a judicious use of the celebrated Hammond drawbars . . . yet how many use them well?

Much has been written about just WHAT the drawbars are; I like to compare them to a shaft of light beamed through a prism. We find, in doing this, that the light which we call "white light" was in reality a whole spectrum of colors, from deepest tones of purples and reds to lightest shades of yellows and creams. So, too, it is the same sensation, tonally, with Hammond Organ. Millions of tonal effects can be easily possible IF the performer would just take the time to learn a few basic principles. The first brown drawbar is the "octave below" normal pitch. The first white drawbar is NORMAL pitch, and each succeeding white bar to the right of that is one octave higher than the former. It's just as simple as that. We might take one of the drawbars at a time and show the tremendous possibilities in solo and combinations, and perhaps we shall do just that. At any rate, in this issue of the TIMES we felt it might be worthwhile to consider seriously and at some length one of the drawbars which almost all the writers and others have pretty much neglected . . . the SECOND brown drawbar.

What makes the second brown drawbar so unusual? In the first place it is one of the "partials" or supporting tones . . . it doesn't sound the CORRECT tone . . . (that is what most people say). What it really does is to sound a FIFTH higher than the tone struck. For example, if you use the second brown drawbar alone, and depress middle C, the tone resultant will be the G above middle C. If you strike the G, the tone resulting will be the D above that G, and so on. How is this useful to the home organist as well as the teacher and the professional? Well, let us take for example, one setting which I have called "My Favorite", which setting is 08 8000 000. In other words, you might remember this as the second brown and the first white drawbars . . . nothing else, just those two. Keep the melody above middle C, and play one of your favorite tunes on this setting. Use, for an accompaniment on

the other manual, something like this: 00 3333 320 on the pre-set models, and 3333 3320 for the lower manual of the Spinet model. Make the melody VERY smooth, and hold the chords smoothly in the left hand. Like it? Of course, you do. This is but one possibility out of thousands which are possible for "unusual" tonal effects with the use of this second brown drawbar.

Here are some "special effects" tonal combinations (not in the sense of winds, waves, rippling water, etc., but rather in the sense of especially beautiful tonal colors) which you may well want to try out on your favorite numbers. Remember, as I have often said, don't feel that because a particular combination is written down or printed in a book (whether it is mine or someone else's) that you MUST obey that marking. Quite the contrary . . . it is a chance for you to try what one man thought would be a good-sounding combination, but which you may find does not fit the acoustics of your music room, and so you would be wise to experiment by changing that printed combination to something you would rather hear. With that in mind, I append some carefully-thought-out tonal combinations which I would like to have you try.

### UPPER MANUAL:

07 3400 000  
07 0625 000  
07 0003 070  
04 0505 060  
04 0555 570  
03 0557 420  
03 5887 420

### LOWER MANUAL:

Accompaniment to all of these on the preset models could be 00 3342 321 or on the Spinet Model 3342 3211

Try these with and without vibrato on the upper manual, using a setting of Vib 3 (on the preset models, and normal on the Spinet Model) constantly on the lower manual. For contrast, try the much-neglected CHORUS setting on C3 or C2. Notice carefully the difference all these separate vibrato and chorus settings make in the tonal result.

I hope that the few suggestions contained in this column will increase your regard for the SECOND BROWN DRAWBAR, and that (as a result) you will use it more often, with more thought, and with more regard for its extreme usefulness in having more FUN AT THE HAMMOND.



# Hammond Organ Studios

---KEEP ABREAST  
OF INCREASING  
INTEREST IN  
ORGAN MUSIC

Hammond Organ Studios across the United States and Canada are keeping pace with the trend of increased family-group activities, and a greater appreciation of music in the home. Hammond Organs are displayed in home-like settings—private practice rooms are available for individual instruction or for the family as a group. Serving as a meeting place for Hammond Organ Society chapters, as well as other events of interest to organists and organ enthusiasts, Hammond Organ Studios are providing a valuable service to their communities.



**BIRMINGHAM, MICHIGAN**  
Built of brick and glass, the new Grinnell branch store in Birmingham, Michigan, has an auditorium with seating for 150 persons for organ concerts and recitals. Hammond Organ instruction and practice is afforded in six sound-proof studios. Grinnell Brothers is the largest retail music dealer in the world.

**LAKEWOOD, COLORADO**  
A two-story-high electric sign marks this new Hammond Organ center close to the city of Denver. The mobile demonstration unit, parked in the drive, can hold several Hammond Organs.



**CINCINNATI, OHIO**  
Only one year old, this spacious studio has already established itself as a hub for Hammond Organ instruction and service. It has private practice rooms and plenty of free parking space, characteristics of most Hammond Organ Studios.

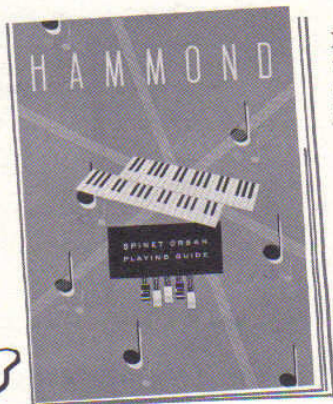


**WHITTIER, CALIFORNIA**  
A home-like atmosphere is the keynote of Hammond Organ Studios. There are private, sound-proof instruction studios in the rear. Most Hammond Organ Studios are open until nine o'clock each evening to accommodate the large numbers of working people taking organ instruction.



**EXTRA**

# NEW 80-PAGE HAMMOND SPINET ORGAN PLAYING GUIDE



Every Hammond Spinet Model owner will want to have a copy of the new Spinet Organ Playing Guide. Now for the first time, a complete playing manual in one handsomely printed volume is available from Hammond Organ Company.

In addition to a complete description of the various organ controls and how they are used, the Spinet Organ Playing Guide includes 80 full pages of information on drawbars and drawbar settings, tone families, playing with percussion, reading music and playing chords. A glossary of musical terms and symbols complete what will prove to be the most valuable and helpful book in your music library.

### How To Get Your Spinet Organ Playing Guide!

You can purchase your Hammond Spinet Organ Playing Guide from Hammond Organ Company, 4202 West Diversey Avenue, Chicago 39, Illinois. The price is \$1.00. Be sure to enclose cash, check, or money order to cover the cost.

## PORTER HEAPS' MUSIC REVIEWS

All of the music reviewed by Mr. Porter Heaps can be purchased from your local music dealer or direct from the publishers. Please don't send any orders to the Hammond Organ Company, as we don't stock any music.

### MEET THE EXTRAVOICE

by Porter Heaps  
Keyboard Publications \$2.00  
908 Grove St., Evanston, Ill.

This folio leads the owner of Hammond's new Extravoice step by step into a full knowledge of the capabilities of this remarkable instrument. Short, easy-to-understand explanations, and complete and easy-to-play musical illustrations demonstrate the four tonal divisions, percussion, how to obtain the two and three-manual organ sound, use of the Extravoice extension, novelty effects, etc. Chord symbols are included for those who do not read bass clef. Binding is the new plastic spiral type which opens so that the music will lie flat on the rack.

### ARRANGING POPULAR MUSIC

by Curt Chambers  
R. T. Whittle and Associates \$2.50  
1307 Linwood Blvd., Oklahoma City 6, Oklahoma

A well conceived and well designed folio, a "do-it-yourself" book for the beginning chord system organist. It will start the organist toward making his own arrangements of popular music. Six different styles are described, and the single-staff melodies are registered for all Hammond Organs including the Extravoice. At the end of each chapter is a list of pop tunes which will sound best played in the particular style illustrated. I've never seen a book quite like this. Every teacher should get a copy right away. Spiral binding.

### CAROL-PRELUDE ON "BRING A TORCH"

by David H. Williams

### CHORAL FANTASIA ON "VENI EMMANUEL"

by Walter Macnutt  
H. W. Gray Co. 75c each  
159 East 48th St., New York 17, N. Y.

Two singles for the Christmas church services, both based on familiar yule melodies. The Williams arrangement is fairly easy, short and melodious. The Macnutt number is a big number, ambitious, not too easy, but should be examined by organists who play above the average.

### CLASSICAL THEMES

arr. by Jerry Mendelson  
King Music Publishing Co. \$1.50  
351 W. 52nd St., New York 19, N. Y.

Short, two-page simple arrangements of twenty standard classical themes, symphonic, opera, piano, etc.

### CHRISTMAS CARILLON

arr. by Chester Nordman  
Shattinger Publications, Inc. \$1.00  
332-334 Arcade Bldg., 812 Olive St., St. Louis, Mo.

A well-arranged ten-page medley of standard carols scored in carillon style, that is, featuring the bell and chime percussion effects.

### MEDITATION ON "GOD REST YOU MERRY"

by Chester Kingsbury  
H. W. Gray Co. \$2.50  
159 East 48th St., New York 17, N. Y.

This number is scored for string trio, violin, viola (or 2nd violin), violincello and organ. Many churches schedule a rather ambitious musical program for the Christmas services, so I have no doubt but that this number will find wide use in churches of all denominations, especially since the arrangement poses no great technical problems for either the organist or the string players, and also since the music is so well written, as of course, we would expect from Mr. Kingsbury. If you use it, be sure you don't play too loud. People want to hear the string trio too, you know.

### THE FRED FEIBEL MASTER COURSE IN ORGAN PLAYING In The Popular Music Style, Vol. 2

by Fred Feibel  
The Boston Music Co. \$6.00  
116 Boylston St., Boston 16, Mass.

Volume One, previously reviewed, dealt with arranging and playing techniques. This volume continues with additional material. Neither book is for the beginning organist, they are designed for the capable player who wishes to advance into a professional style of playing. Nobody is equipped to do the job better than Mr. Feibel who is one of our finest organ players. And he has done an excellent job. The book, one hundred and fifty pages, is well worth the six-dollar price tag. This is not a "short" course, it's a long one which will require concentrated study. But the results will pay off for the time expended. If you are a good player already you'll pick up many new ideas here which will make you a better player.

### MUSIC TO DREAM BY

by Jack Foy  
Willis Music Co. \$1.50  
124 E. Fourth St., Cincinnati 1, Ohio

A collection of fourteen pieces in the popular style, all originals by Mr. Foy. Why play the old chestnuts all the time? These sound fine.



### COLE'S HAMMOND ORGAN

by Walter Rickard  
M. M. Cole Publishing Co. \$1.50  
823 S. Wabash Ave., Chicago, Ill.

This folio is described as an "ideal method for student and teacher, a brief course in learning the basic fundamentals and actually playing the organ in a few weeks." Registrations for both Spinnet and Preset models.

### SONGS FOR THE MODERN ORGANIST

#### Supplement No. 3

Pointer System, Inc. \$1.50  
64 E. 2nd St., Winona, Minn.

A collection of supplementary material to be used in connection with Book 3 of the Modern Organist instruction series.

### ADVENTURE WITH SOUND

by David Carr Glover  
Ethel Smith Music Corp. \$1.50  
1842 West Ave., Miami Beach, Florida

Presenting tiny recital pieces for the very young using some of the unique tonal effects possible on the Hammond Organ.

### EASY CHURCH MUSIC FOR ALL FAITHS

by Virginia Carrington Thomas  
Ethel Smith Music Corp. \$1.50  
1842 West Ave., Miami Beach, Florida

These are original compositions designed for use in church preludes, offertories, postludes. Chord symbols and fingering included.

### CHRISTMAS BELLS

by David Carr Glover  
Ethel Smith Music Corp. 75c  
1842 West Ave., Miami Beach, Florida

A three-page single, a rather nice original tune by Mr. Glover. Very easy and nicely printed. Since the fingering is printed for both melody and the simple sustained chordal accompaniment, this number will be found useful for teaching purposes.

### BEST KNOWN PIECES FOR BEGINNERS

arr. by Fred Feibel  
Emil Ascher, Inc. \$1.50  
745 5th Avenue, New York, New York

An album of easy-to-play concert favorites, fully fingered and with chord symbols. While this volume contains some of the old chestnuts, there are enough you don't bump into too often to make you want to examine this folio. Like "The Mosquito's Parade", "Billboard March".

### STANDARD PIANO AND ORGAN DUETS

arr. by Chester Nordman  
Shattinger Publications, Inc. \$2.00  
Selling Agent: Hansen Publications, Inc., 1842 West Avenue,  
Miami Beach, Florida

Fifteen selections from the classics, sixty-four pages of music, not at all difficult to play. Two copies needed for performance.

### ORVILLE FOSTER PROGRAM FAVORITES

arr. by Orville Foster  
Ethel Smith Music Corp. \$1.50  
1842 West Avenue, Miami Beach, Florida

You'll like this because of the fine arranging, the unique table of contents, and the playing instructions which appear in the back of the book. The folio is designed to be a complete program for the home organist or recitalist. Play through the book, so Mr. Foster tells us, and you will have played a complete, attractive program. I believe he's right, too.

### MUSIC OF THE MASTERS

arr. by Fred Feibel  
The Boston Music Company \$2.50  
116 Boylston Street, Boston 16, Mass.

This is a big book, over a hundred pages. It's a unique book, too. You should by all means get a copy. First of all it's printed in what I call wide-space printing. Not crowded, so as to be easy to read. Second, it's quite well fingered, making the volume useful for teaching. But the most unique feature are the few lines of historical instruction that precedes each number. You won't just play a piece of music, you'll know what you are playing, and how it fits into musical history. I hope enough of you will buy this volume so that Fred (I've never met Mr. Feibel, but through his music I know him well enough to call him "Fred" I think) will be encouraged to bring out another similar folio.

### A HAMMOND ORGAN FAMILY CHRISTMAS

arr. by Walter Rosemont  
Commercial Music Co. \$1.50  
1619 Broadway, New York 19, N. Y.

A collection of fourteen well known carols registered for all models.

### HITS OF THE MONTH

Ethel Smith Music Corp. \$1.00 each  
1842 West Avenue, Miami Beach, Florida

The "Hits of the Month" subscription plan offers selections of the music most recorded and most played on television and radio. A year's subscription of ten issues of "Hits of the Month," each containing four top tunes, costs \$10.00. An album of forty hit songs is sent free as a bonus for subscribing.

#### No. 42

High Hopes  
"Twixt Twelve and Twenty"  
On an Evening in Roma  
My Love, My Love

#### No. 43

Sleep Walk  
I'm Gonna Get Married  
I Want to Walk You Home  
("Til) I Kissed You

### Porter Heaps' Schedule of Appearances

#### "Pointers for the Home Organist"

DATE	SPONSOR	DATE	SPONSOR
December 11, 1959	Hammond Organ Studios of New Westminster, B.C., Canada	January 27, 1960	Fisher Home Furnishing and Music, Norwalk, Ohio
January 25, 1960	Edsel H. Pfabe, Painesville, Ohio	March 22, 1960	Wilking Music Company, Indianapolis, Indiana
January 26, 1960	Hammond Organ Studios of Canton, Ohio		

### Hammond Organ Teacher Workshop and "Fun at the Hammond"

#### Conducted by Milton Page

DATE	SPONSOR	DATE	SPONSOR
January 18, 1960	Hammond Organ Studios of West Palm Beach, Florida	February 5, 1960	M. Steinert & Sons, Springfield, Massachusetts
February 1, 1960	M. Steinert & Sons, Boston, Massachusetts	March 21, 1960	Hammond Organ Studios of Trenton, New Jersey
February 3, 1960	M. Steinert & Sons, Worcester, Massachusetts	March 23, 1960	Whiting's, Bridgeport, Connecticut

#### Richard Liebert

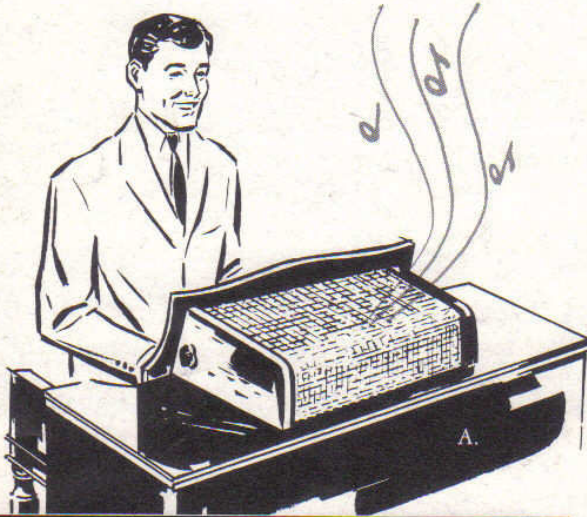
#### Hammond Organ Concerts

DATE	SPONSOR	DATE	SPONSOR
March 8, 1960	Hammond Organ Studios of Fort Worth, Texas	March 10, 1960	Hammond Organ Studios of St. Cloud, Minnesota



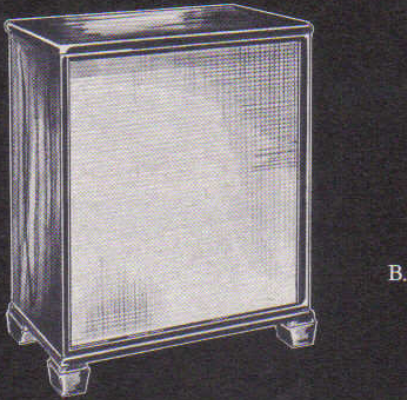
HAMMOND  
ORGAN *Studios* OF FORT WORTH  
2424 FOREST PARK BLVD. - PHONE WA 6-1771  
FORT WORTH, TEXAS

**NEW AND EXCITING FROM HAMMOND**



enjoy  
**NEW**  
HAMMOND ORGAN  
"STEREO-TONE"\*

With Hammond's New Reverberation Unit, Your Spinet Organ Will Take on a Thrilling New Dimension in Sound. Now — enjoy the beauty of Hammond "Stereo-Tone" in even the *smallest* room!



**YOUR CHOICE OF MODELS:**

- A. Music Rack Model. Fits neatly behind music rack.
- B. Floor Model. Can be placed anywhere in room.

*\*Hammond "Stereo-Tone" is an entirely new and exclusive concept in organ tone; the direct signal emanates from the organ, the reverberative signal from the tone cabinet.*

**TRY IT YOURSELF!** For free home demonstration, phone your Hammond Organ dealer today.